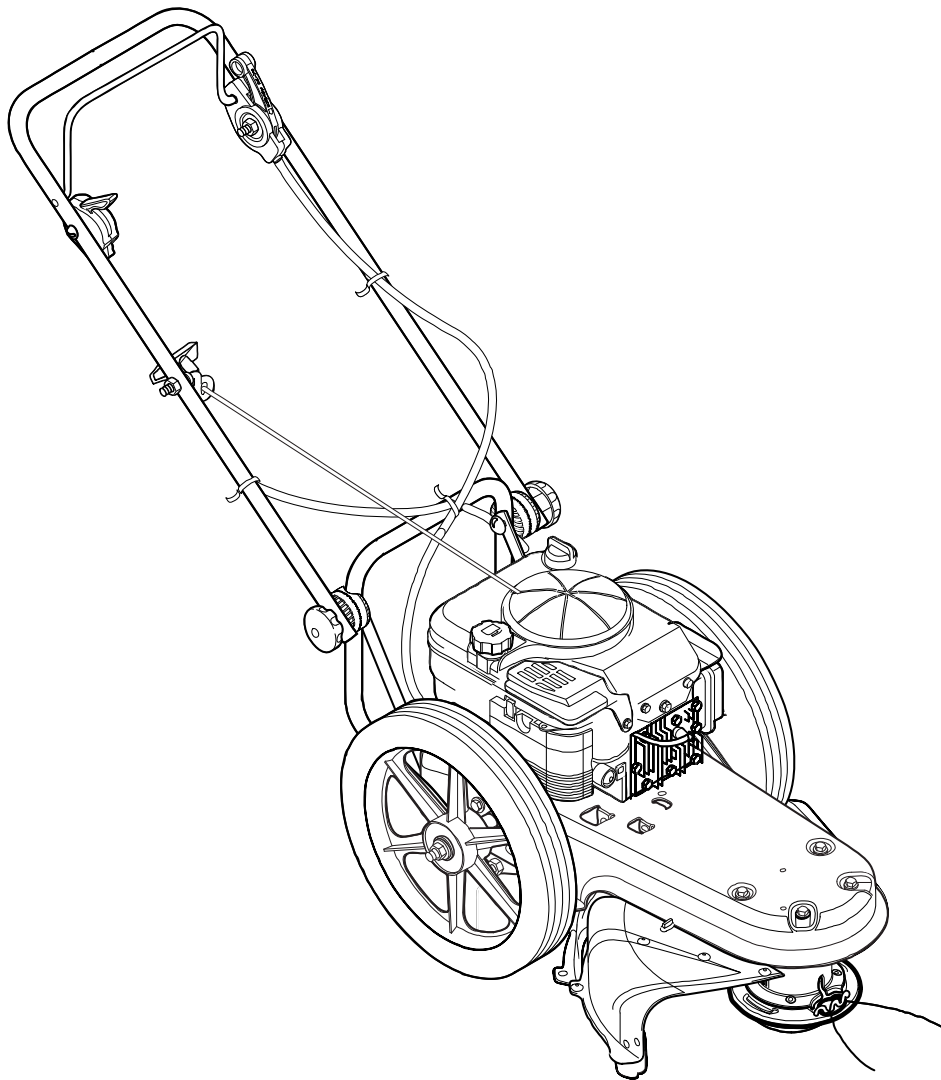




# Parts List

Model  
**1695797**



1739763  
Revision -  
Rev. Date 11/2009

Not for  
Reproduction

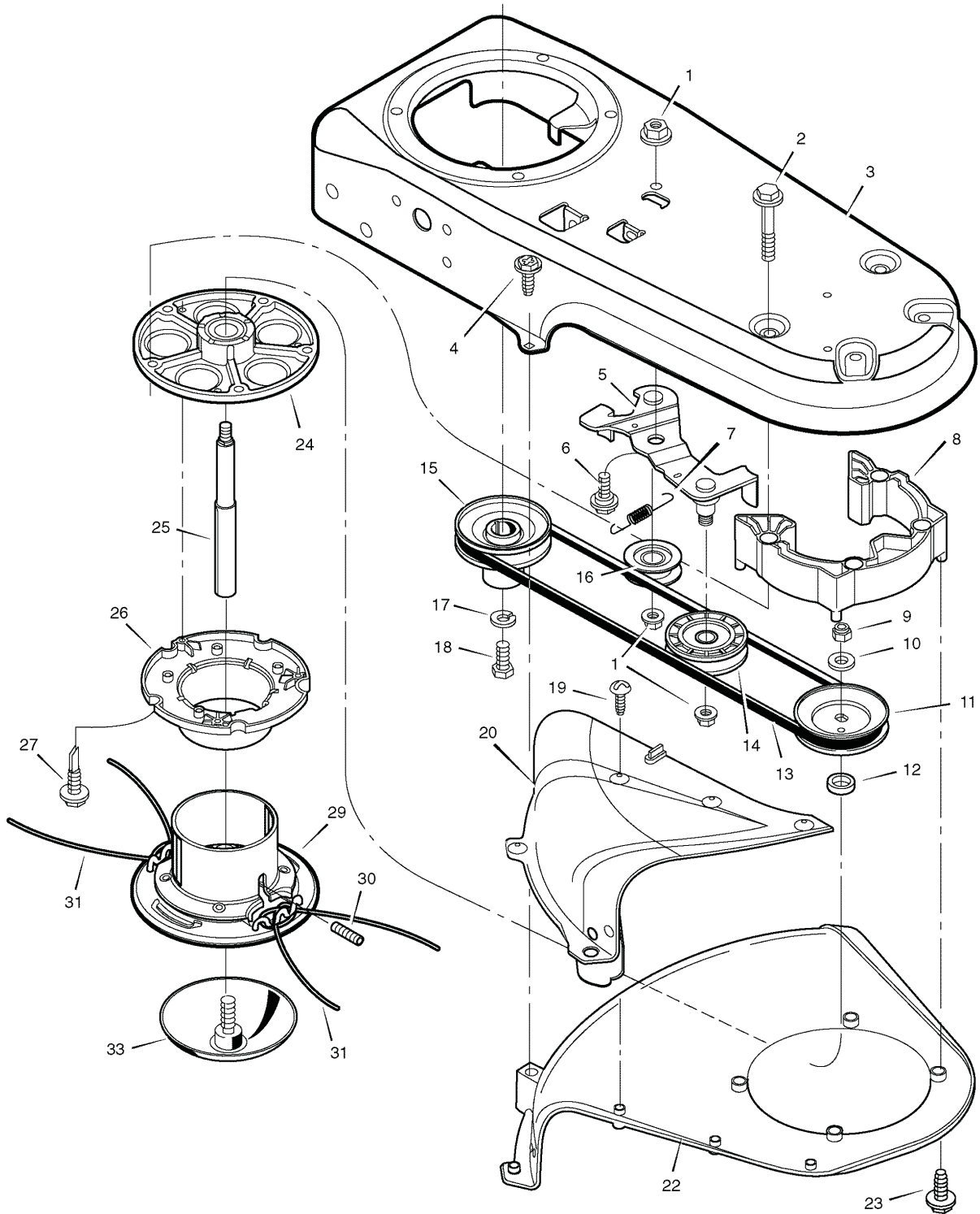
<b>PRODUCT COMPONENTS</b>	<b>PAGES</b>
Cutting Head Assembly .....	4
Housing Assembly .....	6
<b>Torque Specification Chart .....</b>	<b>Inside Back Cover</b>

Not for  
Reproduction

# Cutting Head Assembly

NOTE: Unless noted otherwise,  
use the standard hardware torque  
specification chart.

0005



The above parts group applies to the following Mfg. Nos.:  
1695797 - Murray

## Cutting Head Assembly

REF NO	PART NO.	QTY.	DESCRIPTION
1	015X84MA		NUT
2	025X11MA		BOLT
3	740150E701MA		HOUSING, Trimmer
4	26X256MA		SCREW
5	740232MA		IDLER ASSEMBLY
6	009X48MA		BOLT
7	712403MA		SPRING
8	740292MA		SPACER ASSEMBLY
9	15X119MA		NUT
10	17X104MA		WASHER
11	740171MA		PULLEY, Cutting Head
12	740173MA		SPACER
13	711933MA		BELT
14	740244MA		PULLEY, Idler
15	740179MA		PULLEY, Engine
16	740183MA		PULLEY, Idler
17	018X31MA		LOCKWASHER
18	001X20MA		BOLT
19	26X235MA		SCREW
20	770070MA		GUARD ASSEMBLY
22	740206MA		SHIELD, Trimmer
23	26X294MA		SCREW
24	1001049MA		JACKSHAFT HOUSING ASSEMBLY
25	740300MA		JACKSHAFT
26	740163MA		WRAP, Upper Weed
27	712126MA		SCREW
29	770037MA		CUTTING DISC ASSEMBLY
30	712127MA		SCREW, Set
31	740164MA		LINE, Cutting
33	740299MA		GUIDE ASSEMBLY, Metal Height

### Footnotes

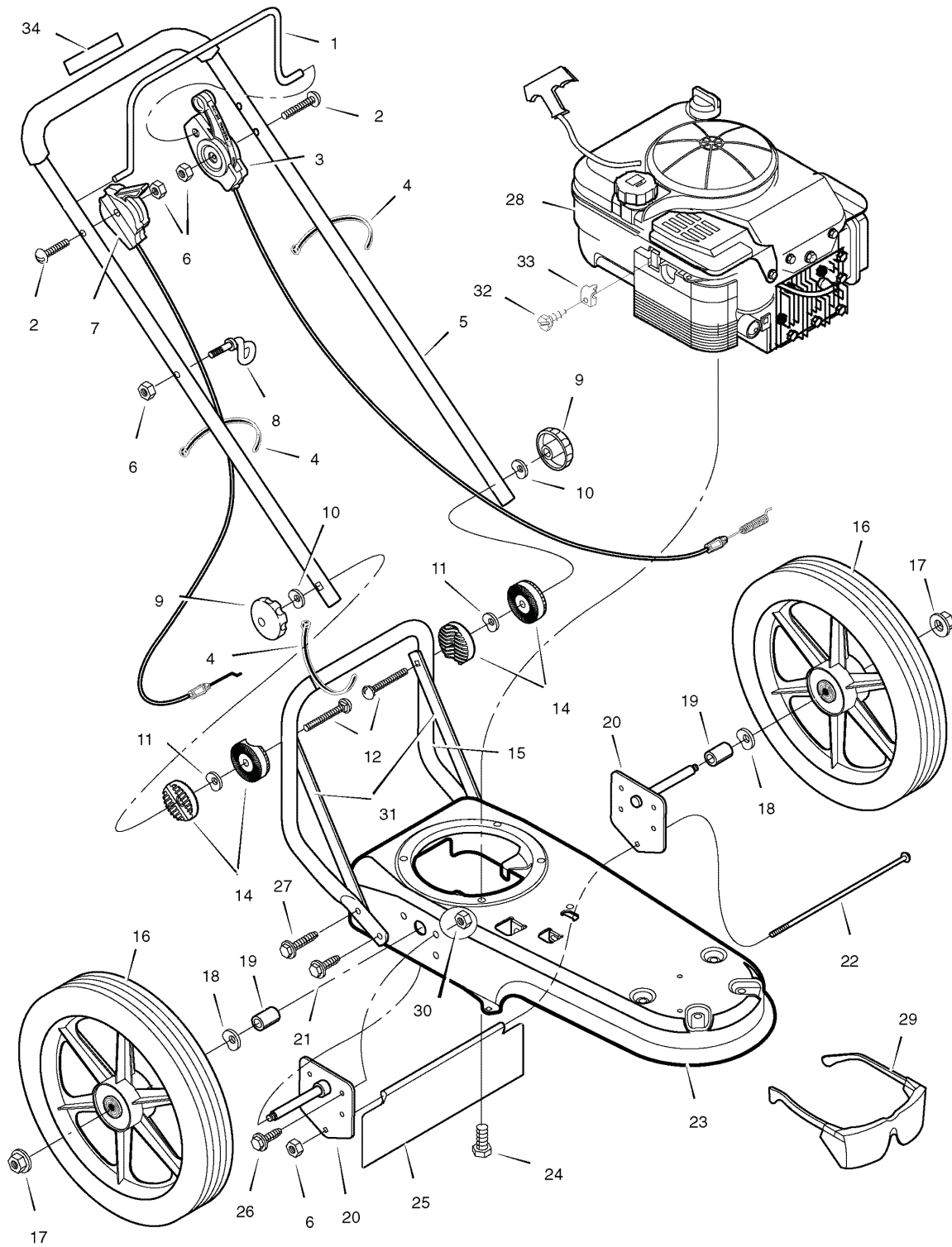
The above parts group applies to the following Mfg. Nos.:

1695797 - Murray

# Housing Assembly

NOTE: Unless noted otherwise,  
use the standard hardware torque  
specification chart.

0003



The above parts group applies to the following Mfg. Nos.:  
1695797 - Murray

## Housing Assembly

REF NO	PART NO.	QTY.	DESCRIPTION
1	740198E701MA		LEVER, Stop
2	323035MA		BOLT
3	740193MA		CABLE, Control Latching
4	071372MA		TIE, Cable
5	740196E701MA		HANDLE, Upper
6	15X116MA		NUT
7	1601039MA		CONTROL, Throttle
8	672510MA		GUIDE, Rope
9	880590YP		KNOB, Handle
10	783000MA		WASHER
11	711936MA		WASHER, Spring
12	711937MA		BOLT
14	740301MA		PIVOT, Handle
15	740195E701MA		HANDLE, Lower
16	740185MA		WHEEL & TIRE
17	015X84MA		NUT, Axle
18	0020X3MA		WASHER, Spring
19	740190MA		SPACER
20	740188MA		AXLE & BRACKET ASSEMBLY
21	26X274MA		SCREW
22	711935MA		BOLT, Carriage
23	740150E701MA		FRAME, Trimmer
24	0025X6MA		BOLT
25	740192MA		SHIELD, Trailing
26	001X45MA		BOLT
27	26X267MA		SCREW
28	122T02-0188-B1		ENGINE (Engine Model: 122T02-0188-B1)
29	711890MA		PROTECTION, Eye
30	015X88MA		NUT
31	1601040MA		STRAP, Vibration Trim
32	26X268MA		SCREW
33	042294MA		CLAMP, Throttle
34	712409MA		DECAL, CE Handle
--	713006MA		DECAL, Warning and Instruction (Not shown)
--	1741776YP		DECAL, Murray 625/56 (Not shown)
--	48X5000YP		DECAL, Noise (Not shown)
--	1739580		INSTRUCTION BOOK & PARTS LIST

### Footnotes

The above parts group applies to the following Mfg. Nos.:

1695797 - Murray

Not for  
Reproduction

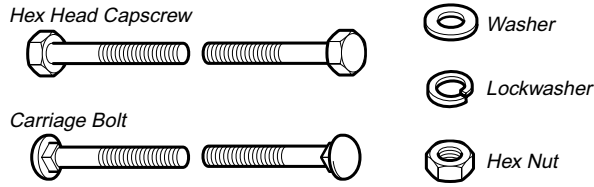


Not for  
Reproduction

Not for  
Reproduction

# Hardware Identification & Torque Specifications

## Common Hardware Types

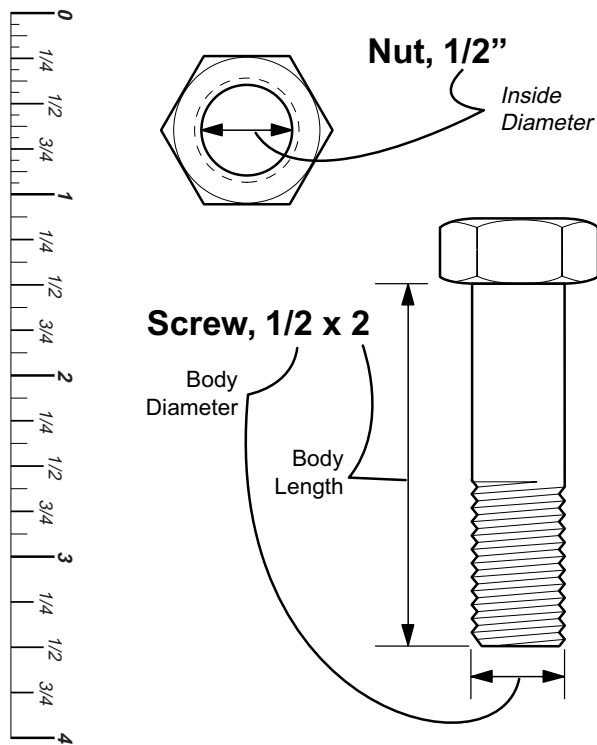


## Standard Hardware Sizing

When a washer or nut is identified as 1/2", this is the *Nominal size*, meaning the *inside diameter* is 1/2 inch; if a second number is present it represents the *threads per inch*

When bolt or capscrew is identified as 1/2 - 16 x 2", this means the *Nominal size*, or *body diameter* is 1/2 inch; the second number represents the *threads per inch* (16 in this example, and the final number is the *body length* of the bolt or screw (in this example 2 inches long).

**The guides and ruler furnished below are designed to help you select the appropriate hardware and tools.**



Torque Specification Chart						
FOR STANDARD MACHINE HARDWARE (Tolerance ± 20%)						
Hardware Grade	No Marks SAE Grade 2		SAE Grade 5		SAE Grade 8	
	in/lbs ft/lbs	Nm.	in/lbs ft/lbs	Nm.	in/lbs ft/lbs	Nm.
8-32	19	2.1	30	3.4	41	4.6
8-36	20	2.3	31	3.5	43	4.9
10-24	27	3.1	43	4.9	60	6.8
10-32	31	3.5	49	5.5	68	7.7
1/4-20	66	7.6	8	10.9	12	16.3
1/4-28	76	8.6	10	13.6	14	19.0
5/16-18	11	15.0	17	23.1	25	34.0
5/16-24	12	16.3	19	25.8	27	34.0
3/8-16	20	27.2	30	40.8	45	61.2
3/8-24	23	31.3	35	47.6	50	68.0
7/16-14	30	40.8	50	68.0	70	95.2
7/16-20	35	47.6	55	74.8	80	108.8
1/2-13	50	68.0	75	102.0	110	149.6
1/2-20	55	74.8	90	122.4	120	163.2
9/16-12	65	88.4	110	149.6	150	204.0
9/16-18	75	102.0	120	163.2	170	231.2
5/8-11	90	122.4	150	204.0	220	299.2
5/8-18	100	136	180	244.8	240	326.4
3/4-10	160	217.6	260	353.6	386	525.0
3/4-16	180	244.8	300	408.0	420	571.2
7/8-9	140	190.4	400	544.0	600	816.0
7/8-14	155	210.8	440	598.4	660	897.6
1-8	220	299.2	580	788.8	900	1,244.0
1-12	240	326.4	640	870.4	1,000	1,360.0

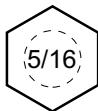
### NOTES

- These torque values are to be used for all hardware excluding: locknuts, self-tapping screws, thread forming screws, sheet metal screws and socket head setscrews.
- Recommended seating torque values for locknuts:
  - for prevailing torque locknuts - use 65% of grade 5 torques.
  - for flange whizlock nuts and screws - use 135% of grade 5 torques.
- Unless otherwise noted on assembly drawings, all torque values must meet this specification.

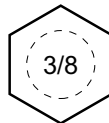
## Wrench & Fastener Size Guide



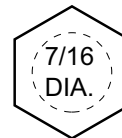
1/4" Bolt or Nut  
Wrench—7/16"



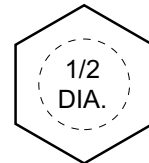
5/16" Bolt or Nut  
Wrench—1/2"



3/8" Bolt or Nut  
Wrench—9/16"



7/16" Bolt or Nut  
Wrench (Bolt)—5/8"  
Wrench (Nut)—11/16"



1/2" Bolt or Nut  
Wrench—3/4"

Not for  
Reproduction